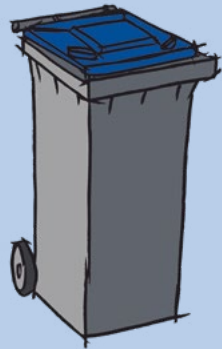


# Wohin gehört mein Abfall?

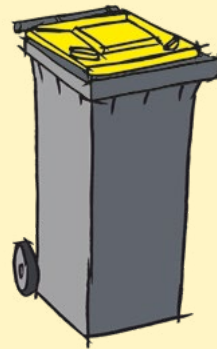
## Bioabfall



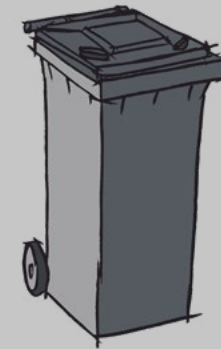
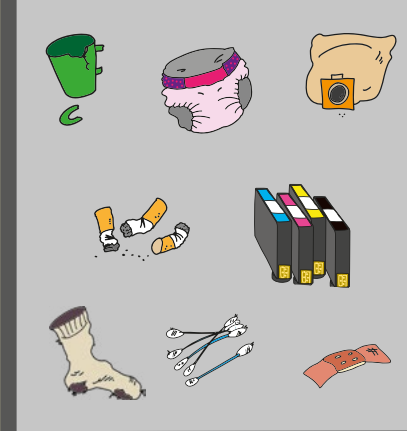
## Altpapier



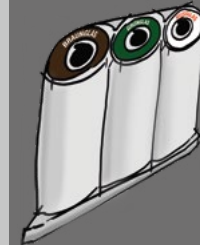
## Wertstofftonne



## Restmüll



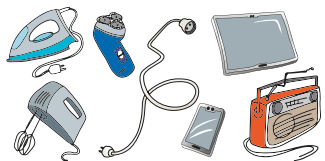
## Altglas



## Altkleider



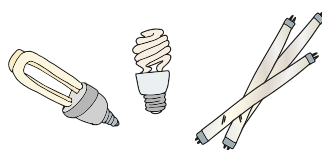
## Elektrokleingeräte



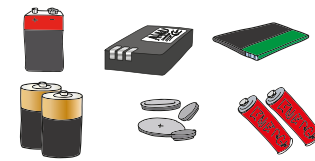
## Elektrogroßgeräte



## Leuchtstoffröhren Energiesparlampen



## Batterien



## Schadstoffe



## Sperrmüll

